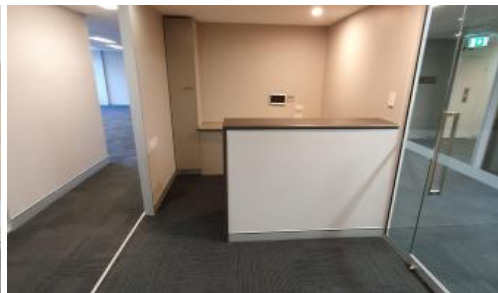


7-11 Short St, Southport



## Quality Office for Lease in the Southport CBD

### Prime Office Space for Lease

- Located in a Premium Medical Precinct
- 120m2
- Secure basement parking
- End-of-trip facilities
- Close to public Transport
- On-street parking

The above information provided has been furnished to us by the vendor/s. We have not verified whether or not that information is accurate and do not have any belief in one way or the other in its accuracy. We do not accept any responsibility to any person for its accuracy and do no more than pass it on. All interested parties should make and rely upon their own inquiries in order to determine whether or not this information is in fact accurate.

Price	Contact Agent
Property Type	Commercial
Property ID	192
Office Area	120 m2

### Agent Details

Marco Kuzmanovski -  
0490177683

### Office Details

Delmege Agency  
Level 2, Short Street Southport,  
QLD, 4215 Australia  
07 5511 7021

# DELMEGE